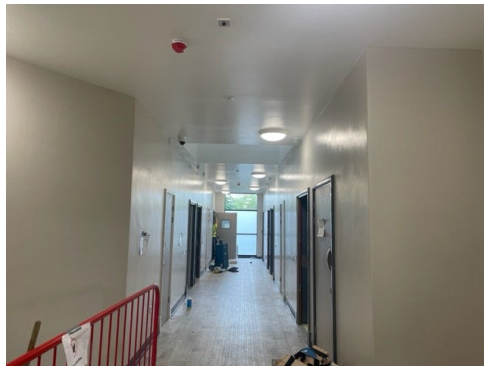


## CASE STUDY: New PICU Building, Tameside Hospital



**Client:** Pennine Care NHS Foundation Trust

**Main Contractor:** CAREFOOT<sup>GB</sup>

**Contract:** New build

**Contract Value:** £280,000

**Contract Period:** 15 Weeks

**Date Completed:** February 2023

### About the project:

A brand new state of the art psychiatric unit incorporating en-suite bedrooms, on-site gym, therapy kitchen, garden and activity spaces for patients to enjoy.

### Our role in the project:

On this project we completed the plastering, drylining, metal stud partitions, suspended ceilings and PermaRock insulated render system packages